

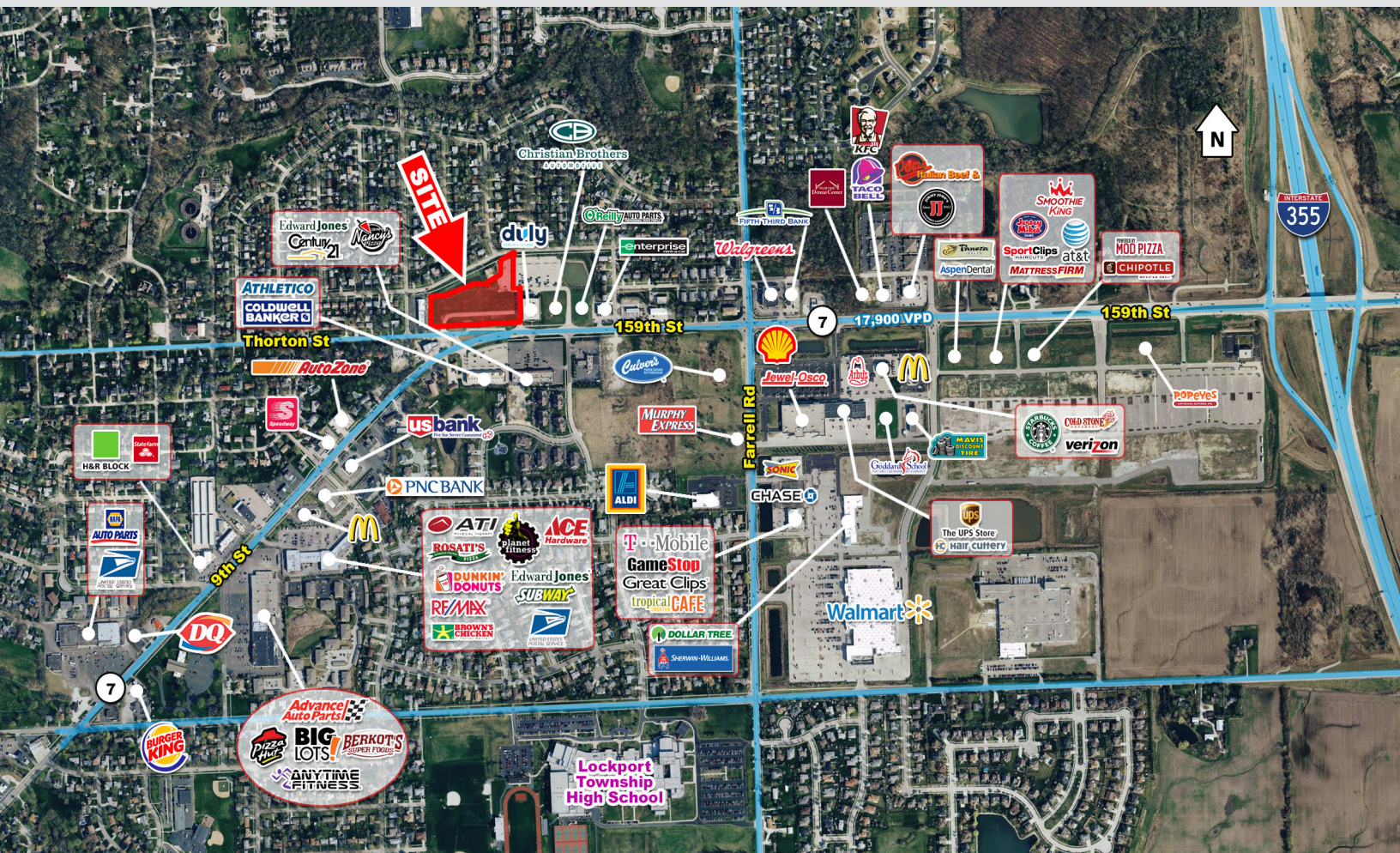
LOTS FOR SALE OR LEASE

LOCKPORT CROSSINGS

159th St & Thornton St
Lockport, Illinois 60441



EDGEMARK



PROPERTY HIGHLIGHTS

- Located 1/2 Mile west of I-355 Interchange at a new spotlight intersection.
- Lots are fully improved with sanitary sewer and water, and offsite detention.
- Strong demographics.
- Parking lot easement benefits each lot with 15% of the required parking space that can be counted and used on the Duly Health and Care site at no charge.

AREA RETAILERS



LOTS AVAILABLE FOR SALE OR LEASE

CURRENTLY SUBDIVIDED

Lot 5 - 3.3 Acres (Divisible)
Lot 6 - 1.22 Acres

OPTION A

Lot 5 - ±1 Acre
Lot 6 - ±1 Acre
Lot 7 - ±.95 Acre
Lot 8 - ±.90 Acre

DEMOGRAPHICS

	1 MILE	3 MILE	5 MILE
POPULATION	9,237	33,020	106,361
AVG HH INCOME	\$113,563	\$117,136	\$113,061
DAYTIME POPULATION	3,046	8,979	27,476
TRAFFIC COUNTS	159TH STREET	17,900 VPD	

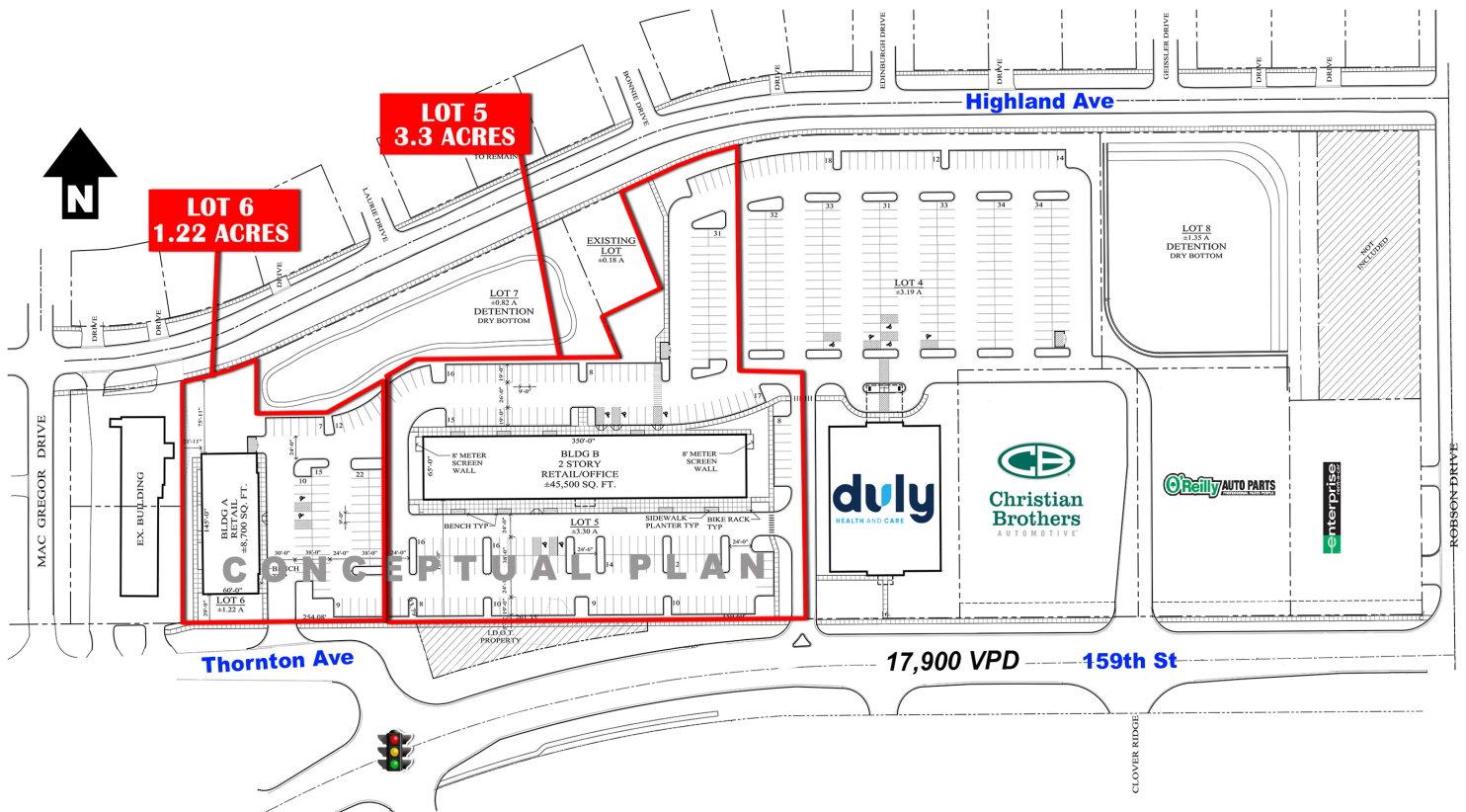
CONTACT
INFORMATION

MATT SMETANA
630.572.5632
msmetana@edgemarkllc.com

MIKE WESLEY
630.572.5610
mwesley@edgemarkllc.com

EDGEMARK COMMERCIAL REAL ESTATE SERVICES LLC
2215 York Road, Suite 210
Oak Brook, IL 60523
630.472.1010
www.edgemarkllc.com

CURRENTLY SUBDIVIDED INTO 2 LOTS



OPTION A SUBDIVIDED INTO 4 LOTS

