

**500
N LA SALLE**



IDEAL BUILDING FOR RETAIL/MEDICAL/OFFICE



**CONTACT
INFORMATION**

MATT SMETANA
630.572.5632
msmetana@edgemarkllc.com

MIKE WESLEY
630.572.5610
mwesley@edgemarkllc.com



- Approximately 5,500 - 18,000 SF Available (Three Floors).
- Multi-tenant or single user opportunity.
- Perfect for retail/medical/office.
- River North location with close proximity major expressways and public transportation.
- Area attractions/tenants include The Mart (Merchandise Mart) and a new Target along with many quality restaurants (Maggiano's, Mastro's Steakhouse, Coco Pazzo, Gene & Georgetti, etc.)
- Strong daytime populations and incomes.
- Make a statement utilizing the marquee signage on LaSalle and Illinois.



N LaSalle Sign

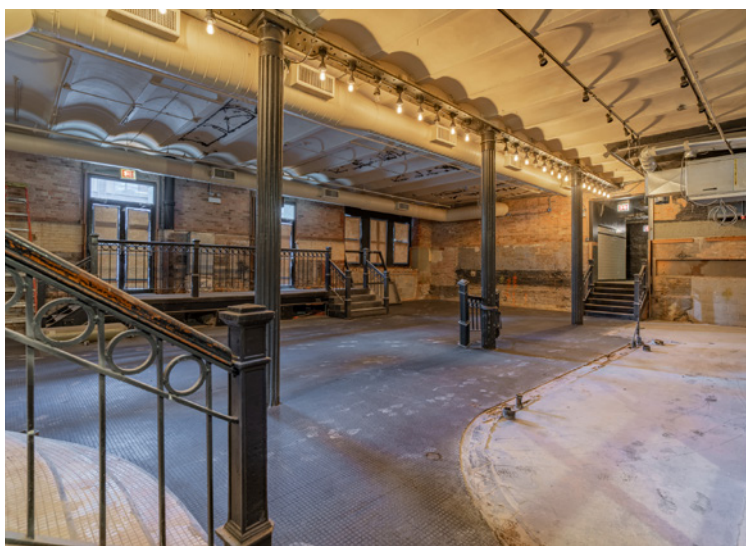
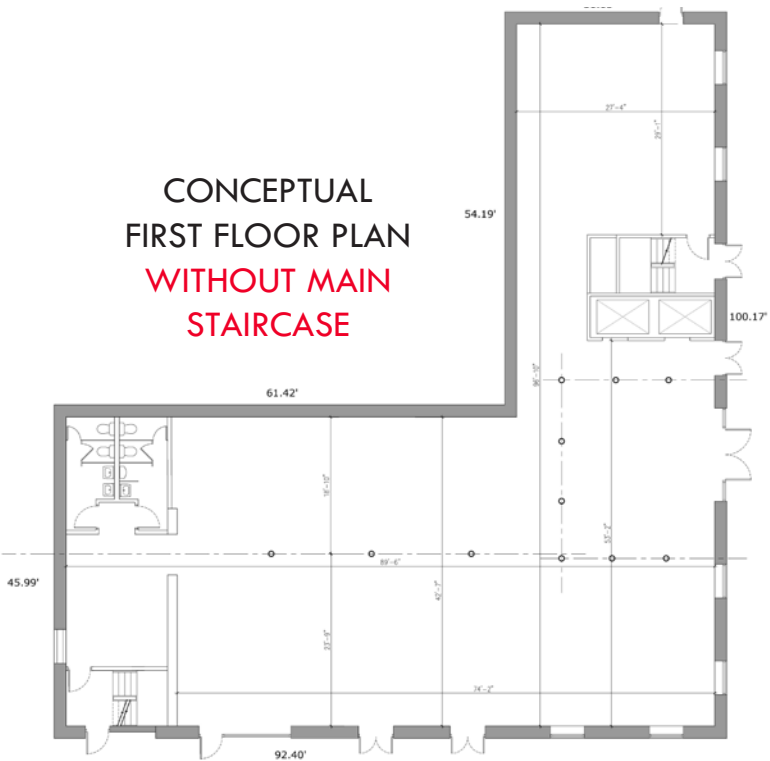


Illinois St Sign

DEMOGRAPHICS

POPULATION		DAYTIME POPULATION		AVERAGE HH INCOME	
.5 MILE	27,384	.5 MILE	181,820	.5 MILE	\$178,036
1 MILE	104,862	1 MILE	541,995	1 MILE	\$173,198
1.5 MILE	164,070	1.5 MILE	614,625	1.5 MILE	\$164,942

FIRST FLOOR



- Ceiling Height
12' .86" to bottom of joist
12' .27" to bottom of lowest beam
- Fully operational windows.
- Exposed brick walls.

CONTACT INFORMATION

MATT SMETANA

630.572.5632

msmetana@edgemarkllc.com

MIKE WESLEY

630.572.5610

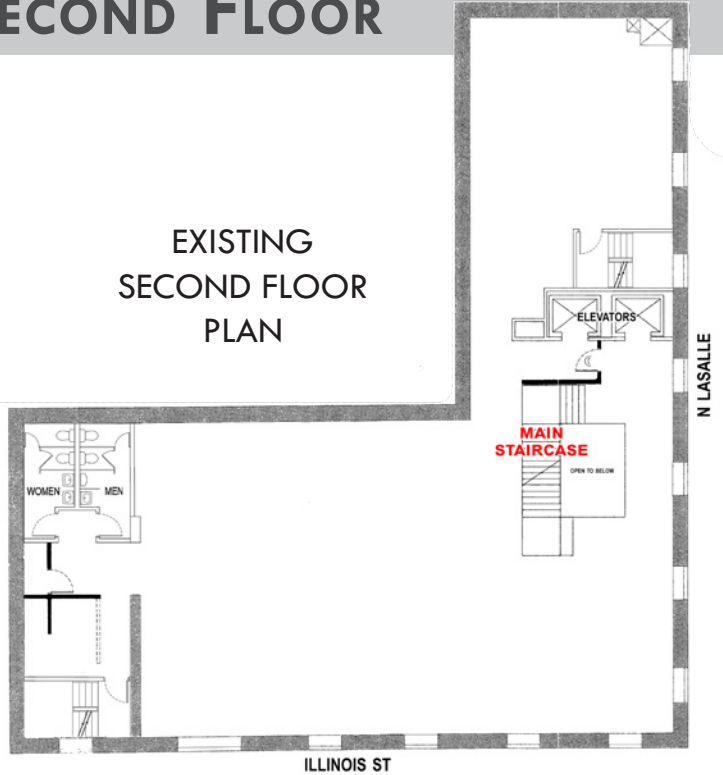
mwesley@edgemarkllc.com



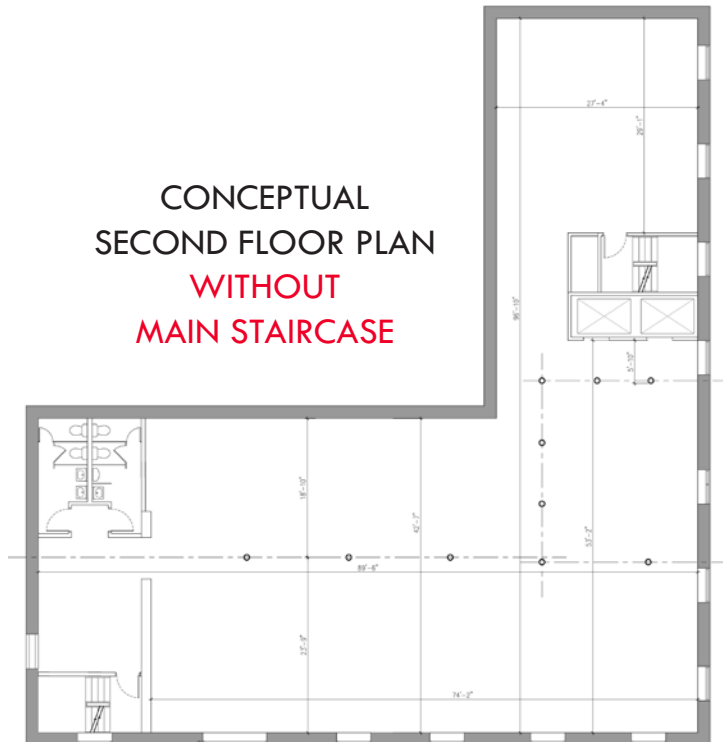
E D G E M A R K

SECOND FLOOR

EXISTING
SECOND FLOOR
PLAN



CONCEPTUAL
SECOND FLOOR PLAN
**WITHOUT
MAIN STAIRCASE**



- Ceiling Height
14' 2" to bottom of joist
12' 6" to bottom of lowest beam
- Fully operational windows.
- Exposed brick walls.



CONTACT INFORMATION

MATT SMETANA
630.572.5632
msmetana@edgemarkllc.com

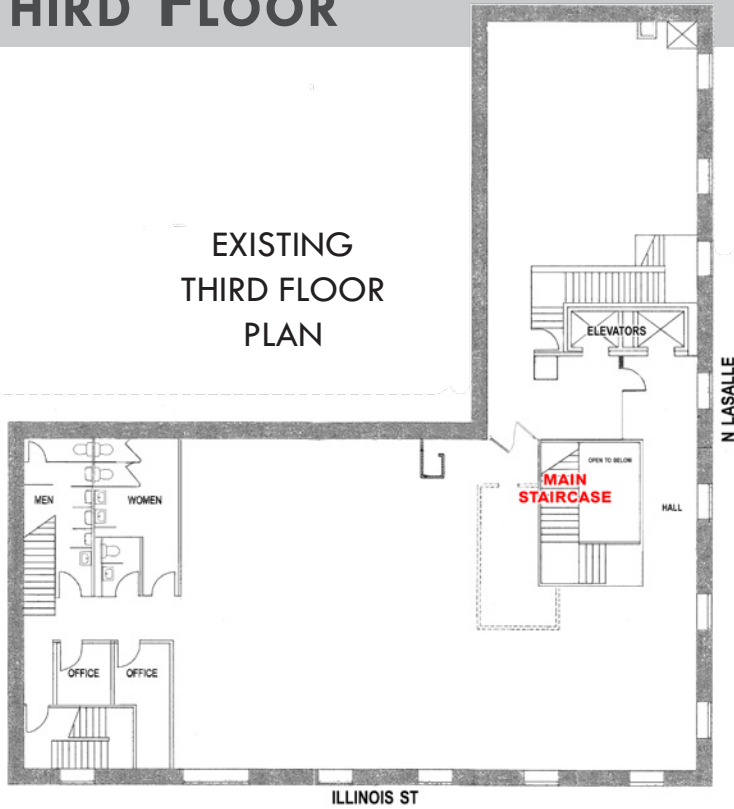
MIKE WESLEY
630.572.5610
mwesley@edgemarkllc.com



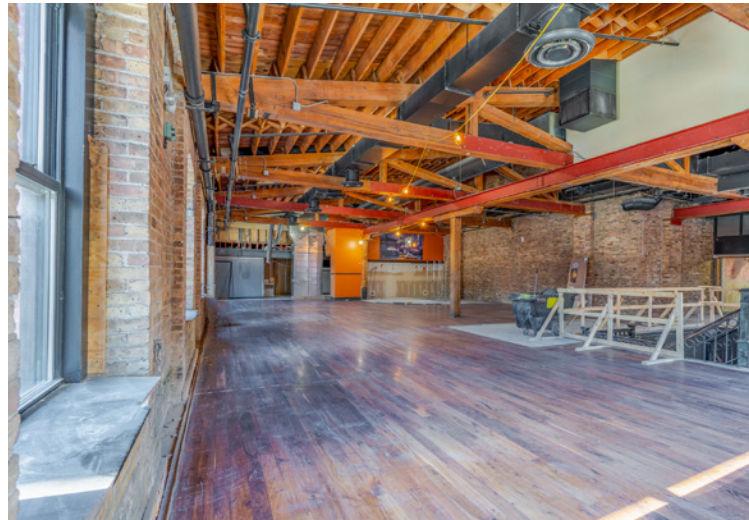
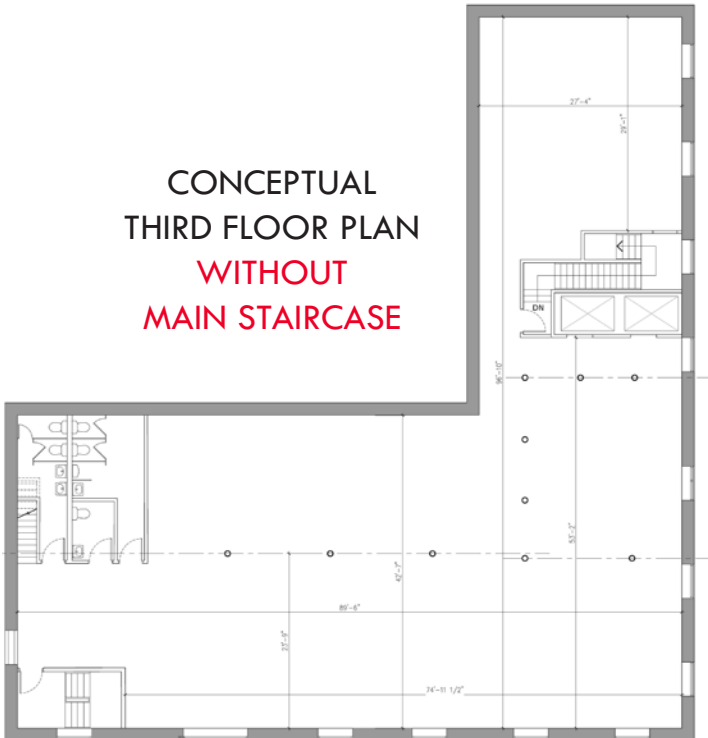
EDGEMARK

THIRD FLOOR

EXISTING
THIRD FLOOR
PLAN



CONCEPTUAL
THIRD FLOOR PLAN
WITHOUT
MAIN STAIRCASE



- Wood Truss Ceiling
- Ceiling Height
12' to bottom of joist
10' .71" to bottom of lowest beam
- Fully operational windows.
- Exposed brick walls.

CONTACT INFORMATION

MATT SMETANA
630.572.5632

msmetana@edgemarkllc.com

MIKE WESLEY

630.572.5610

mwesley@edgemarkllc.com



E D G E M A R K