

SPACE FOR LEASE

JEWEL ANCHORED CENTER

29-37 E St. Charles Road
Villa Park, Illinois 60181



EDGEMARK



SPACE AVAILABLE FOR LEASE

3,242 SF

PROPERTY HIGHLIGHTS

- Strong, well positioned Jewel-Osco anchored center.
- Endcap position.
- High density with strong traffic counts.

DEMOGRAPHICS

| | 1 MILE | 3 MILE | 5 MILE |
|---------------------------|----------------------|------------|-----------|
| POPULATION | 16,921 | 118,688 | 269,806 |
| AVG HH INCOME | \$126,129 | \$153,301 | \$142,602 |
| DAYTIME POPULATION | 4,221 | 77,663 | 219,832 |
| TRAFFIC COUNTS | ST CHARLES RD | 21,616 VPD | |
| | ARDMORE AVE | 7,809 VPD | |

CONTACT
INFORMATION

MATT SMETANA
630.572.5632

mismetana@edgemarkllc.com

MIKE WESLEY
630.572.5610

mwesley@edgemarkllc.com

EDGEMARK COMMERCIAL REAL ESTATE SERVICES LLC
2215 York Road, Suite 503
Oak Brook, IL 60523
P 630.472.1010 F 630.472.1019
www.edgemarkllc.com



Walgreens

Old Second



ST CHARLES RD

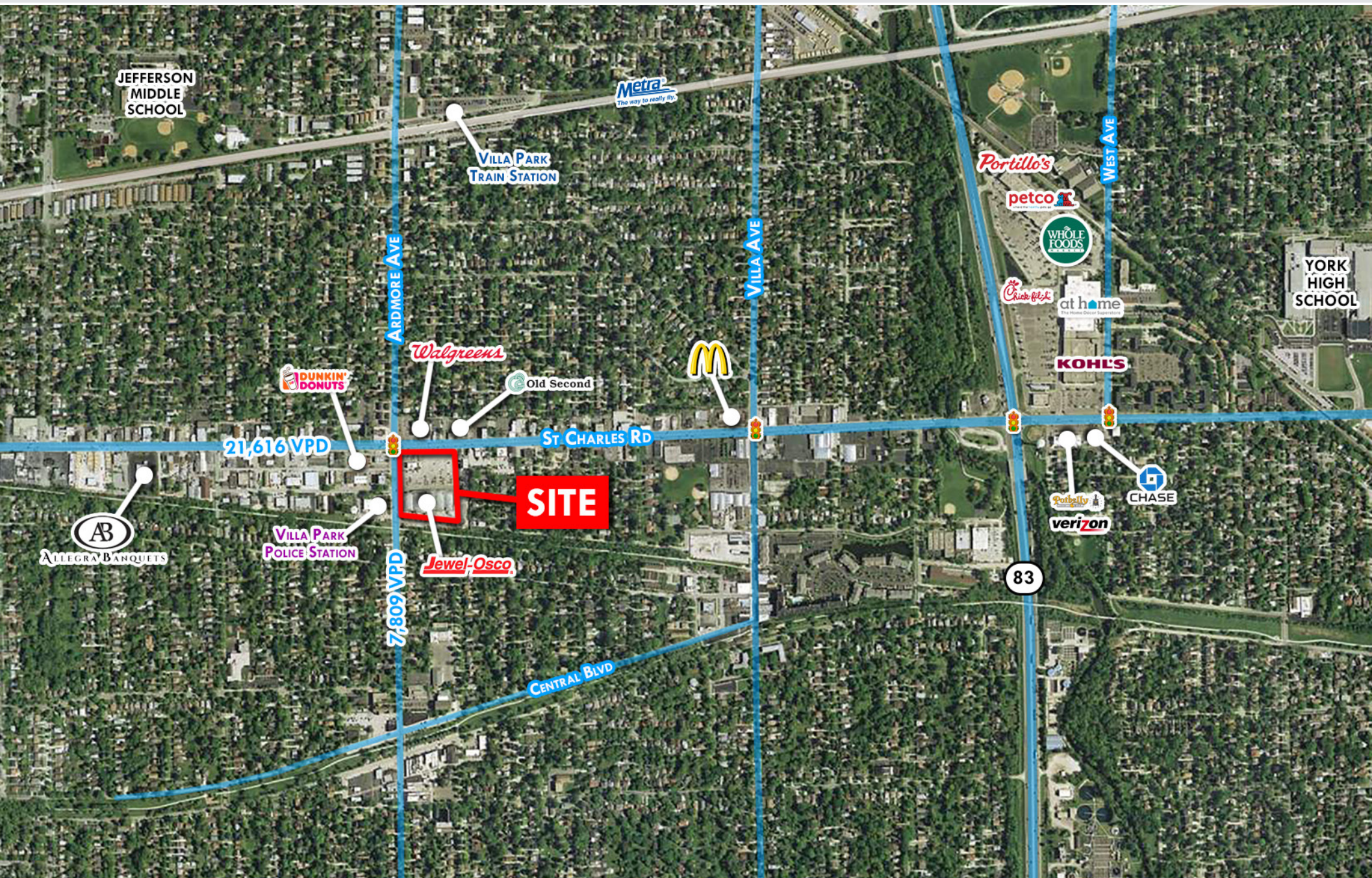
21,616 VPD

Mobil

ARDMORE AVE

29
3,242 SF

33
Jewel-Osco



CONTACT
INFORMATION

MATT SMETANA
630.572.5632
msmetana@edgemarkllc.com

MIKE WESLEY
630.572.5610
mwesley@edgemarkllc.com