

FOR SALE, LEASE OR BUILD TO SUIT

**1.33 ACRES**

SWC Delany Road & Barberry Lane  
Gurnee, Illinois 60031



EDGEMARK

**SPACE AVAILABLE FOR SALE, LEASE OR BUILD TO SUIT**

1.33 Acres with visibility and frontage on Delany Road & Barberry Lane

**ZONING**

G-O

**P.I.N.**

#07142000008

**SALE PRICE**

\$598,000

**TAXES**

\$5,220

**TRAFFIC COUNTS**

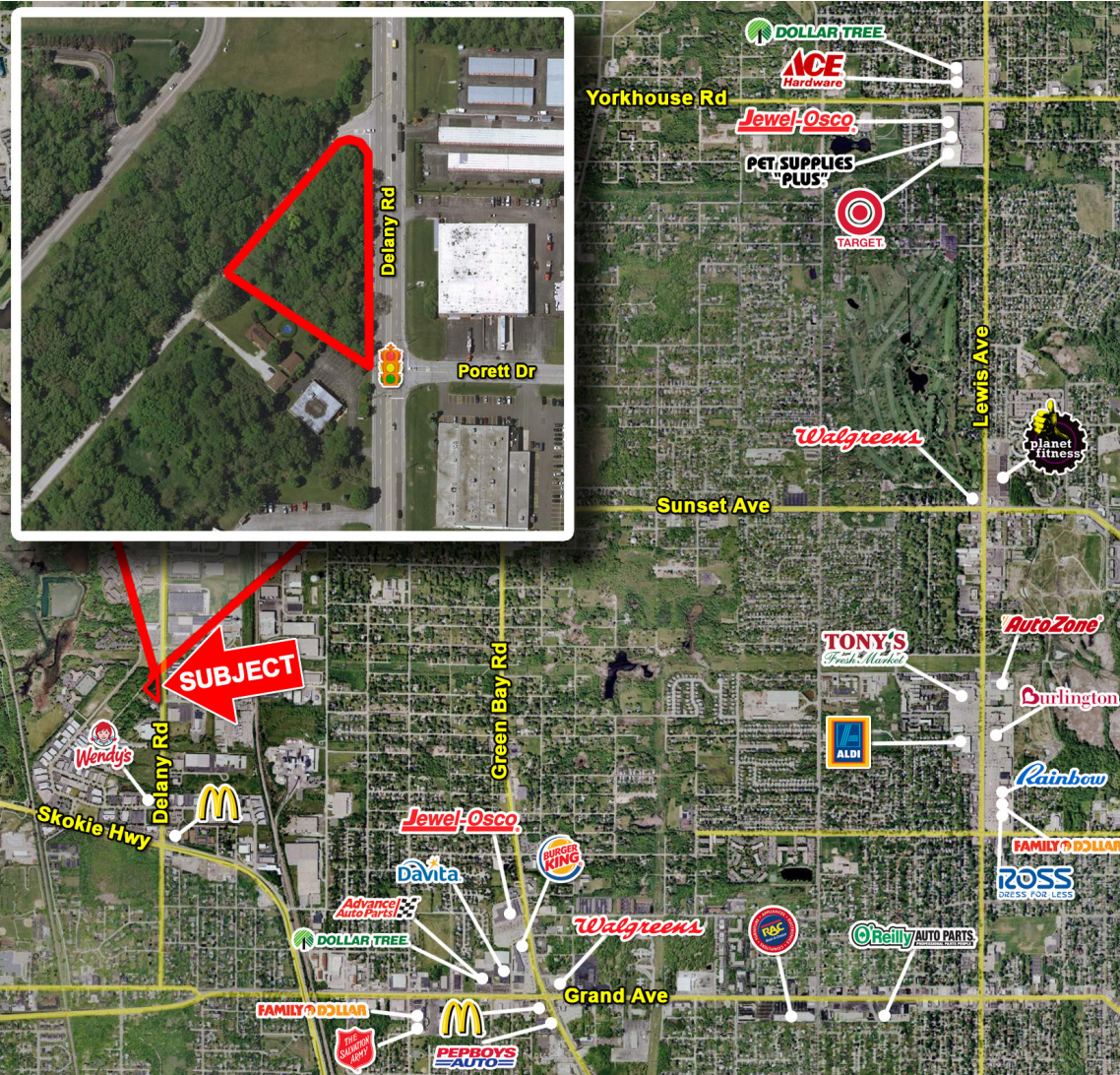
Delany Road - 29,351 VPD

Skokie Hwy - 26,912 VPD

A great parcel of commercial land at the southwest corner of Delany Road and Barberry Lane that is ideal for RETAIL or OFFICE.

**DEMOGRAPHICS**

	1 MILE	3 MILE	5 MILE
<b>POPULATION</b>	5,287	65,867	170,489
<b>AVG FAMILY INCOME</b>	\$99,743	\$123,259	\$135,144
<b>BUSINESSES</b>	5,287	65,867	170,489
<b>DAYTIME POPULATION</b>	5,285	24,957	58,704



CONTACT  
INFORMATION

JEFF KOWAL

O: 630.572.5613

C: 630.235.3319

jkowal@edgemarkllc.com

EDGEMARK COMMERCIAL REAL ESTATE SERVICES LLC

2215 York Road, Suite 210

Oak Brook, IL 60523

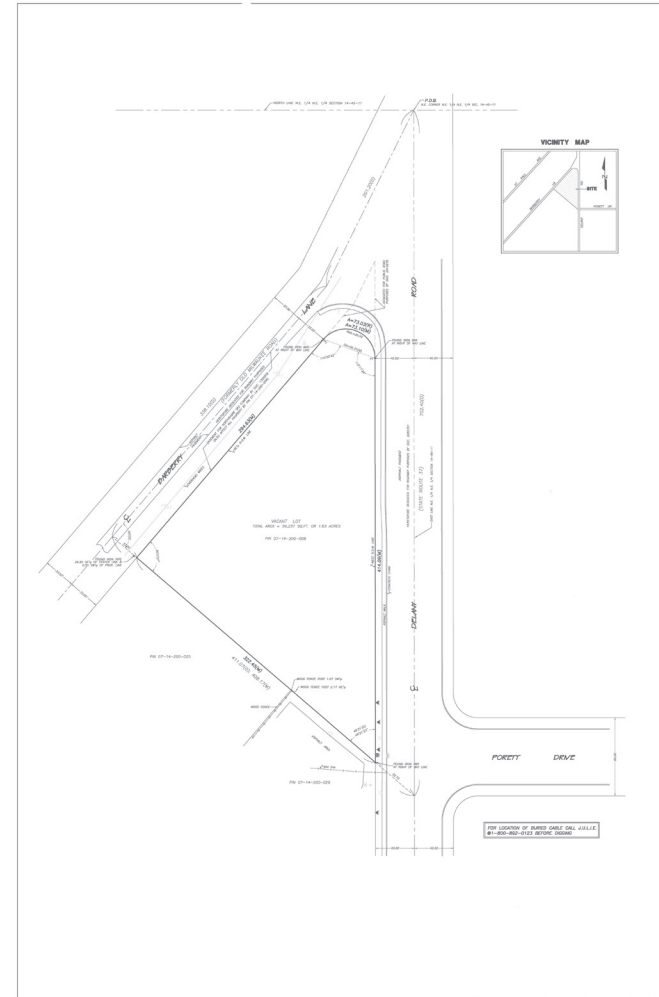
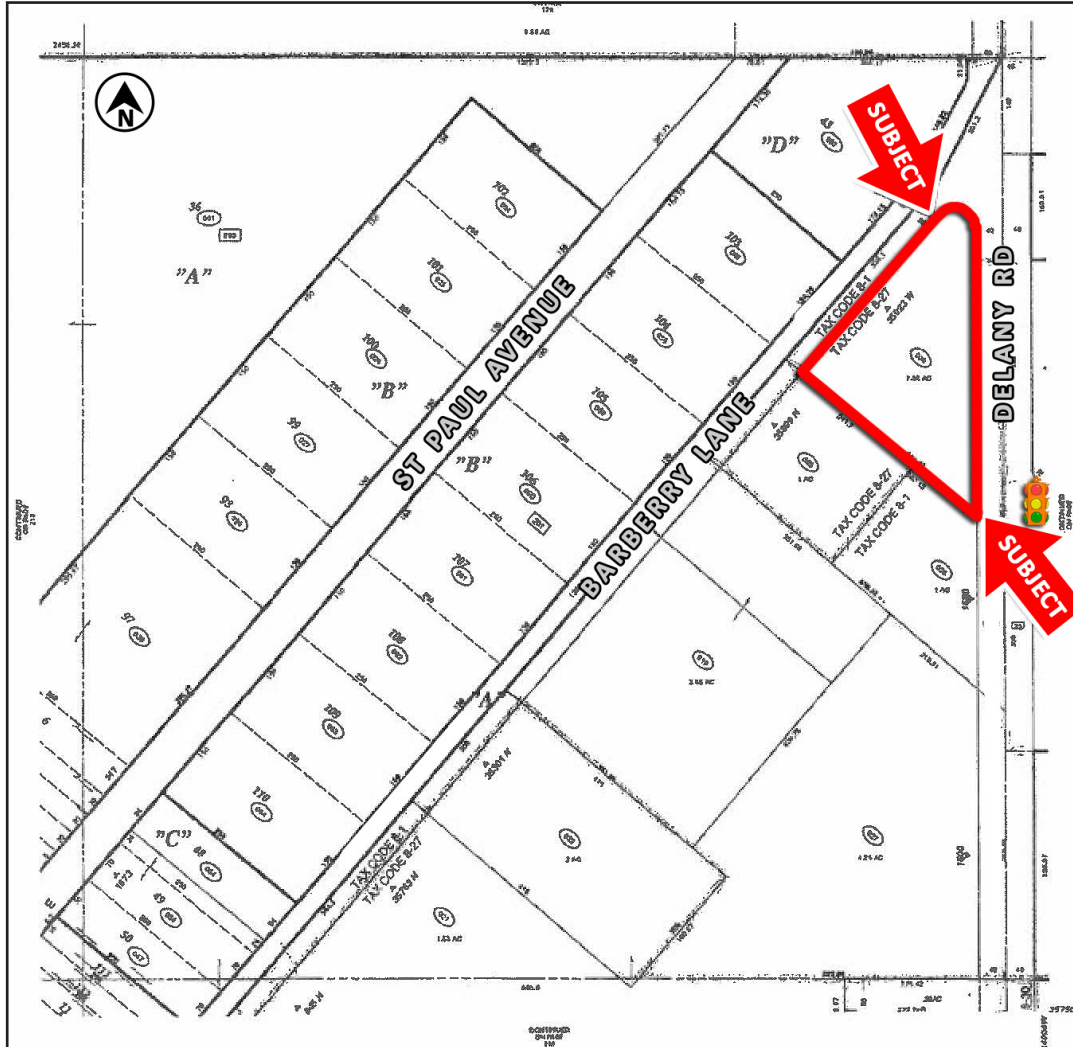
630.472.1010

www.edgemarkllc.com

# 1.33 Acres SWC Delany Rd & Barberry Ln

Gurnee, Illinois

## SITE PLAN



**FOR SALE, LEASE OR BUILD TO SUIT**  
**IDEAL FOR RETAIL OR OFFICE**



CONTACT  
INFORMATION

**JEFF KOWAL**  
O: 630.572.5613  
C: 630.235.3319  
[jkowal@edgemarkllc.com](mailto:jkowal@edgemarkllc.com)